



Fig. 74 – Green pug moth larva (18–20 mm at maturity).



Fig. 75 – Tarnished plant bug adult (7 mm).



Fig. 76 – White sticky traps placed within two above grass provide information on tarnished plant bug density and timing.



Figs. 77 & 78 – 77: Fruit buds damaged by tarnished plant bug feeding before tight cluster usually abscise. 78: Buds damaged after tight cluster may develop into a fruit.

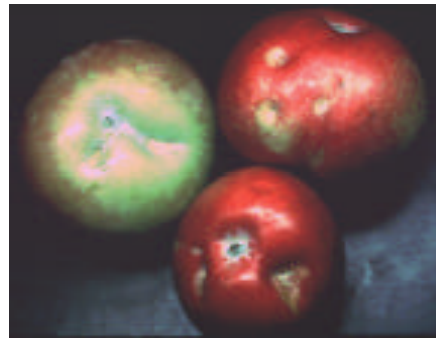


Fig. 79 – Mature apples with deformations caused by early season tarnished plant bug feeding.



Fig. 80 – Gypsy moth larva (3–90 mm ).



Fig. 81 – Green fruitworm larva (35–40 mm at maturity).

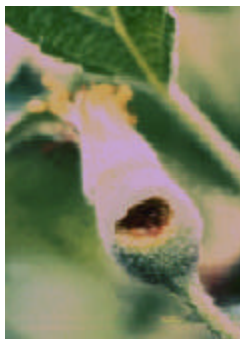


Fig. 82 – Green fruitworm damage.



Fig. 83 – Green fruitworm damage at harvest.



Fig. 84 – Mullein bug nymph next to pinhead (2 mm).



Fig. 85 – Mullein bug damage to young fruit.

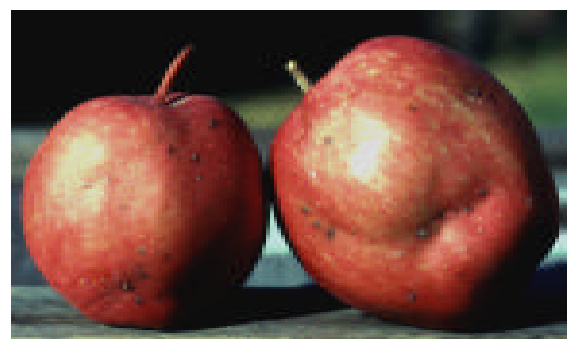


Fig. 86 – Mullein bug damage at harvest.