



Fig. 38 – Brown decay just below soil line is a common symptom of *Phytophthora collar rot*.



Fig. 39 – Meadow vole damage to trunk..

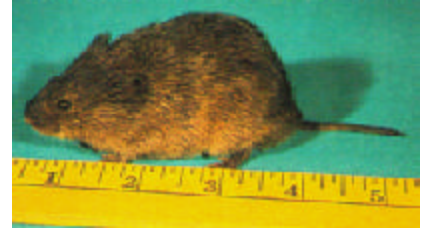


Fig. 40 – Meadow vole.



Fig. 41 – Dogwood borer larva in burr knot (13 mm at maturity).



Fig. 42 – Pine vole damage to trunk and roots.

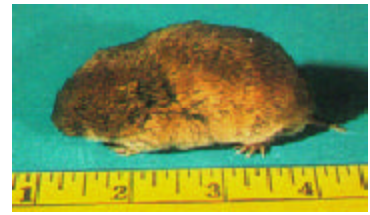


Fig. 43 – Pine vole.



Fig. 44 – Roundheaded apple tree borer (3 – 45 mm as they mature).



Fig. 45 – Apple pith moth larva in shoot (8–10 mm when full grown).



Fig. 46 – Shoot dieback caused by apple pith moth larva feeding.



Fig. 47 – Oriental fruit moth damage to terminal. Arrow shows larval entry point.



Fig. 48 – Pear thrips damage to apple blossom.



Fig. 49 – Trees with lack of fruiting wood in lower canopy because of repeated deer browsing.