



Fig. 26 – Flyspeck fungus.

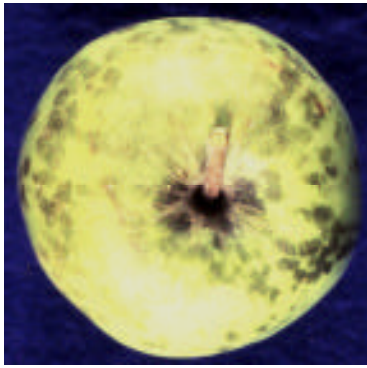


Fig. 27 – Sooty blotch fungus.



Fig. 28 – Powdery mildews causes white powdery covering on leaves that may also be curled and distorted.



Fig. 29 – Cedar-apple rust galls on required alternate host juniper.



Fig. 30 – Cedar-apple rust galls produce gelatinous spore horns during late-April to early-June rains.



Fig. 31 – Cedar-apple rust leaf spots on apple.



Fig. 32 – Quince rust causes fruit deformation in the calyx end.



Fig. 33 – Marginal leaf necrosis attributed to calcium spray burn.



Fig. 34 – Fruit russet attributed to concentrated spray residue.



Fig. 35 – Blue mold (*Penicillium spp.*) postharvest storage rot.

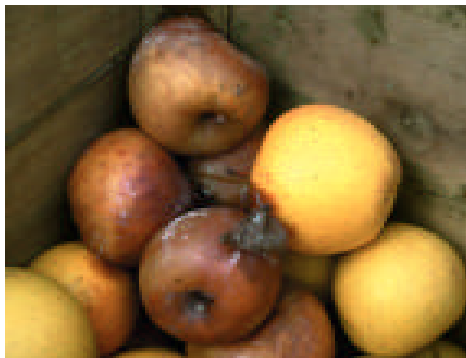


Fig. 36 – Gray mold (*Botrytis spp.*) postharvest storage rot.



Fig. 37 – Moldy core in seed cavity.