



Fig. 14 – Apple scab lesions on leaves and fruit.



Fig. 15 – Apple scab lesion on young fruit.



Fig. 16 – Early symptoms of blossom blight (fire blight). Note ooze droplets and discoloration of pedicel.



Fig. 17 – Blossom blight (fire blight) on pear.

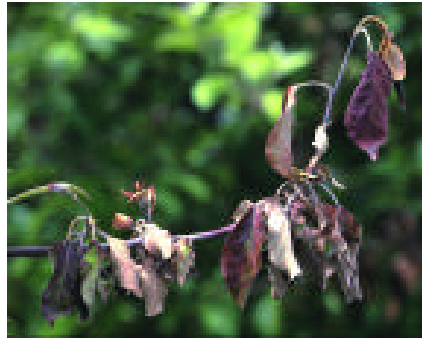


Fig. 18 – Shoot blight (fire blight) with characteristic crook at tip.



Fig. 19 – Frog-eye leaf spot caused by black rot fungus.



Fig. 20 – Black rot canker.



Fig. 21 – Black rot fruit infection.



Fig. 22 – Bitter rot fruit infection with concentric rings of spore structures.



Fig. 23 – Calyx end rot or Dry-eye rot.

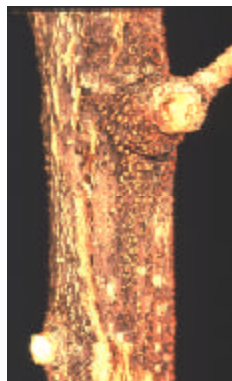


Fig. 24 – Nectria causes twig blight and wood canker. Note characteristic orange-red fruiting structures.



Fig. 25 – Cytospora is a saprophytic fungus often found on wood which has been killed by freezing, drought or other causes.