

Fig.1 – Differences between frog-eye leaf spots (caused by black rot fungus) and scab lesions.

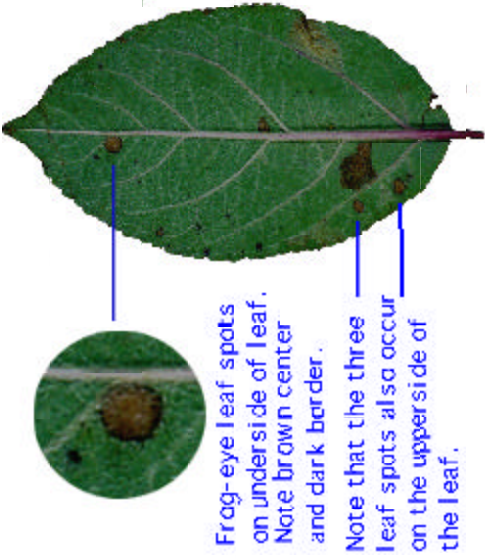


Fig. 2 – Frog-eye leaf spots on leaf underside.

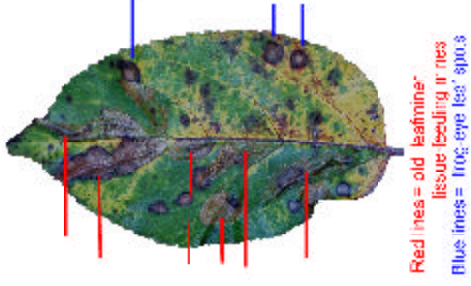


Fig. 3 – Scab indexing is only practical on leaves that do not have numerous discolorations and lesions from other causes.



Fig. 4 – Distinguishing between purple leaf spots that accumulate as leaves age and apple scab lesions.

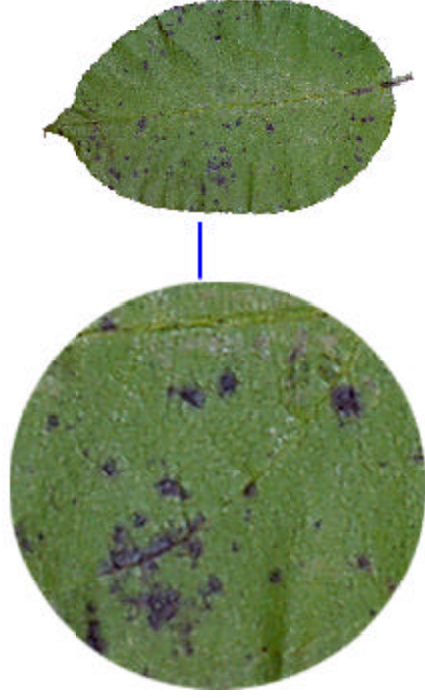


Fig. 5 – Small purple leaf spots that are not caused by apple scab.